

# Line pressure regulator HP 350

- single stage for high flow and high outlet pressure (up to 50 bar) – with a balanced poppet



Fittings and gauges optional

TECHNICAL DETAILS		DESCRIPTION	APPLICATION AREA
Body:	Brass, nickel and matt chrome plated or stainless steel 1.4404 electropolished	The line pressure regulator HP 350 is a single stage pressure regulator, brass nickel and matt chrome plated or stainless steel 1.4404 electro polished.	The line pressure regulator HP 350 is a single stage pressure regulator with a high flow rate and is designed for pressure reduction of high purity gases.
Seat:	PCTFE	It is designed as a diaphragm pressure regulator and especially made for high outlet pressure.	The HP 350 reduces the pressure of compressed gases or fluids to a maximum outlet pressure of 50 bar.
Diaphragm:	1.4435		It functions according to the principle guiding the equilibrium of forces between the set spring force and the outlet pressure.
Leakage rate:	10 <sup>-8</sup> (mbar l/s) Heliumlecktest	The HP 350 reduces the pressure of compressed gases or fluids to a maximum outlet pressure of 50 bar.	The line pressure regulator HP 350 is equipped with a balanced poppet and by so doing ensures constancy in operating pressure during the entire gas withdrawal process, and occurring decrease in inlet pressure.
Gas purity:	≤ 6.0		<b>Special characteristics:</b> The line pressure regulator HP 350 is characterized through his high control accuracy at the pressure area from 0.1 bar to 50 bar.
Max. inlet pressure:	300 bar	It can be equipped optionally with a outlet gauge.	
Outlet pressure ranges:	0,1-1,7; 1-3,5; 1-7; 1-12; 1-17; 1-30; 1-50 bar	The line pressure regulator with integrated balance poppet ensures a constant outlet pressure even when the initial pressure drops.	
Operating temp.:	-20°C to +70°C	Degreasing under pressure.	
Gauges:	Safety version to EN 837-1 KL1.6		
Dimensions (wxhxd):	122 x 123 x 126 mm		
Weight:	1750 g		
Connections:	NPT 3/8" f / NPT 1/2" f		

## QUALITY STANDARD

The company Hornung is certified to **DIN EN ISO 9001:2008** and **ISO 14001:2009**. All single parts are manufactured, assembled and tested by in-house production. The finished parts are therefore under all criteria of German quality control with 100% final inspection.

# HORNUNG

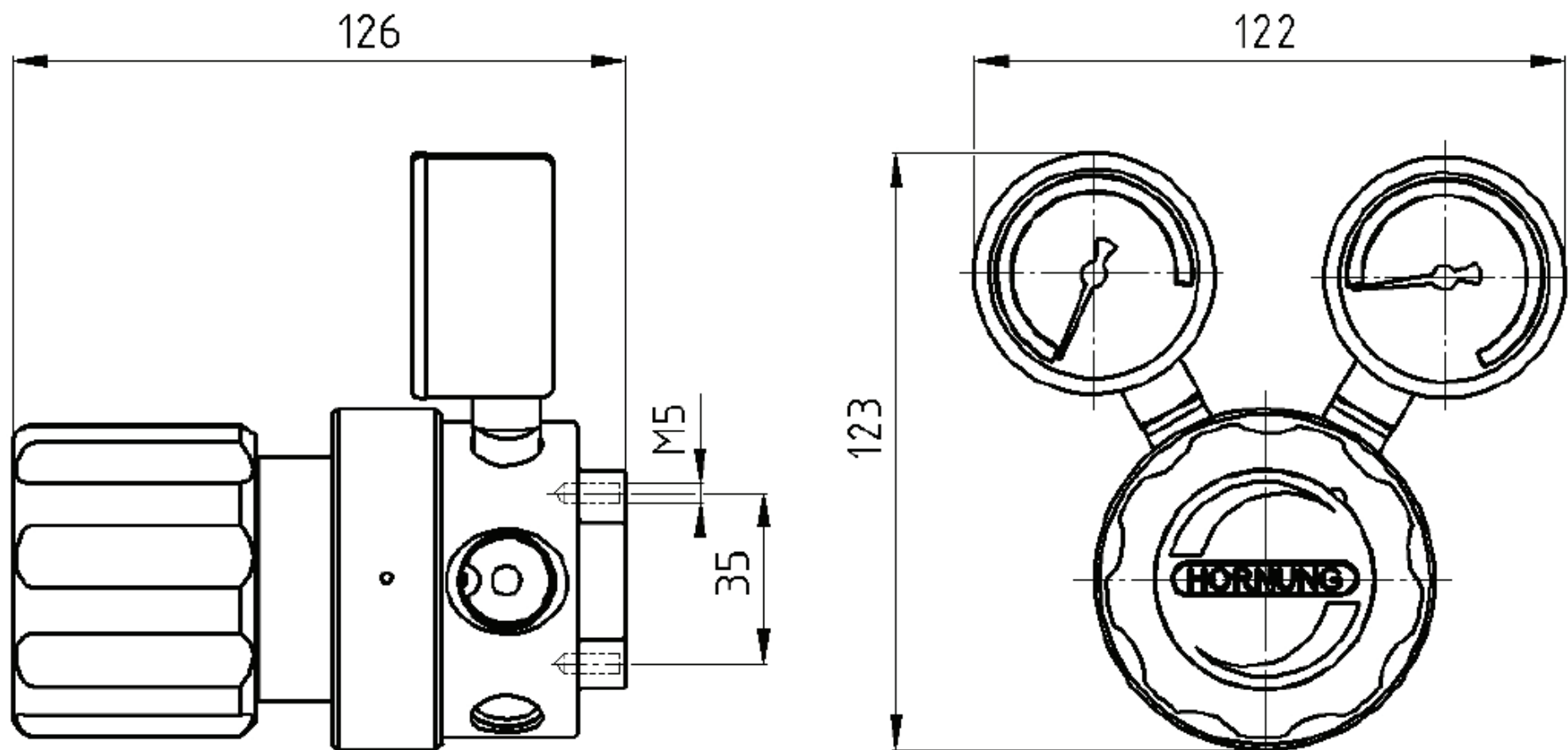
Präzision made in Germany

Rathenaustraße 55  
63263 Neu-Isenburg

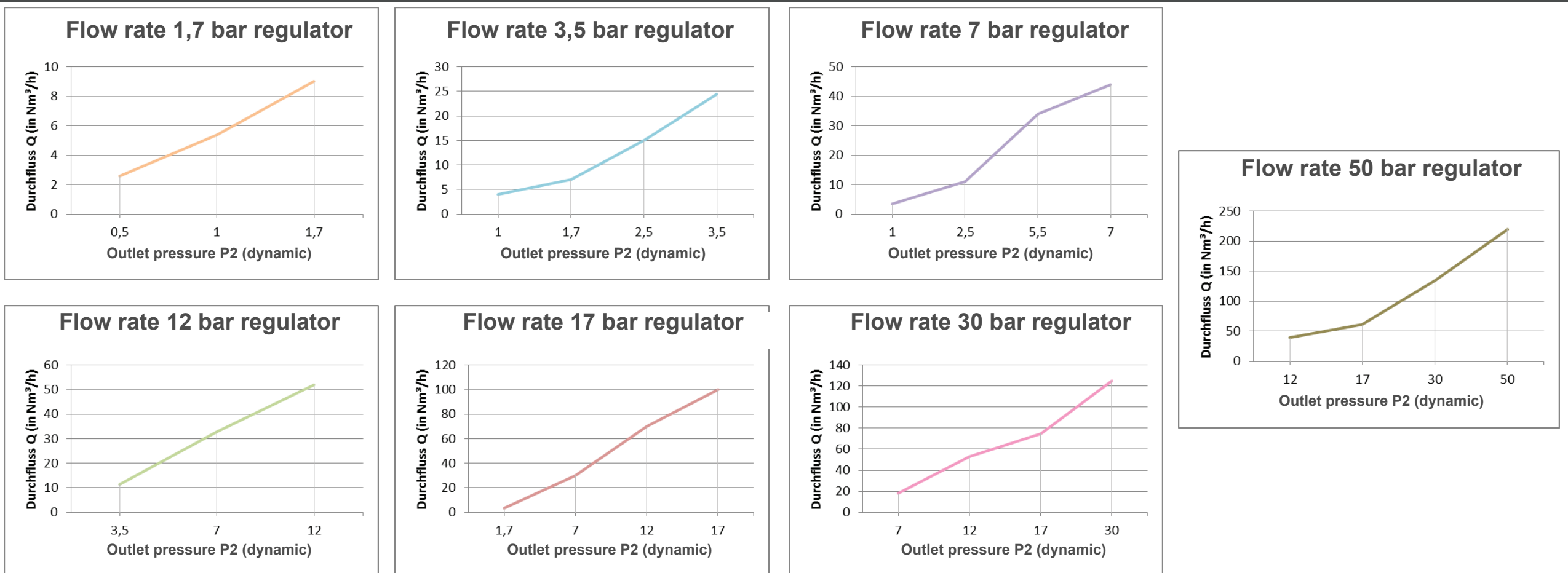
Phone: +49 6102 7883-70  
Fax: +49 6102 7883-40

www.hornung.org  
info@hornung.org

# HP 350



## FLOW CURVE



## ORDER DETAILS

<b>Material:</b> 1 = Stainless steel 2 = Brass	<b>Inlet:</b> 1 = left to right 2 = right to left	<b>Outlet pressure ranges:</b> 1 = 0,1 - 1,7 bar 2 = 1 - 3,5 bar 3 = 1 - 7 bar 4 = 1 - 12 bar 5 = 1 - 17 bar 6 = 1 - 30 bar 7 = 1 - 50 bar	<b>Gauges:</b> 1 = none 2 = with inlet and outlet gauges	<b>Option on the front and back:</b> 0 = NPT 3/8" f 1 = NPT 1/2" f 6 = compression fitting 6 mm 8 = compression fitting 8 mm 10 = compression fitting 10 mm 12 = compression fitting 12 mm 15 = compression fitting 15 mm
--	---	---	--	--

HP350- Type	2 Material	3 Inlet	2 Outlet	1 Gauge	6 Option	Gas type Gas type
----------------	---------------	------------	-------------	------------	-------------	----------------------

Accessories: see total catalogue segment

7. Gauges, fittings and accessories